



Certificate of Analysis

Provided for quality control or research and development purposes.

Powered by Confident LIMS
1 of 3

Sammie Rizk
11575 SW Pacific Highway
Tigard, OR 97223
bluestarhemp596@gmail.com
(503) 716-7329
Lic. #

Sample: 2605CH0094.0499

Strain: Train Wreck (CBD-V)
Batch#: ; Batch Size: g
Sample Received: 05/05/2026; Report Created: 05/11/2026
Harvest/Production Date:
Sampling: Random; Environment: Room Temp

Train Wreck (Batch 402)

Plant, Hemp
Harvest Process Lot: ; METRC Batch: ; METRC Sample:

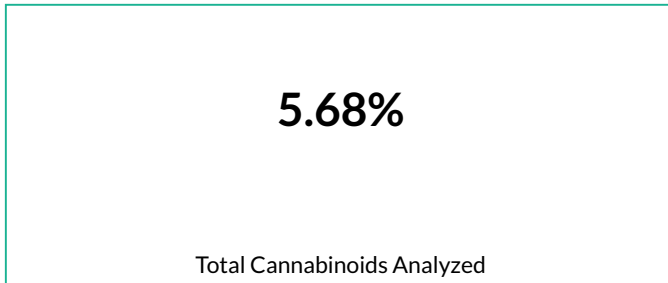
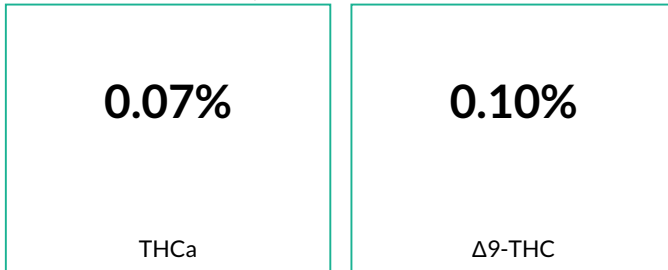


Analyte	Analyte
THCa	CBDV
Δ9-THC	CBN
Δ8-THC	CBGa
THCV	CBG
CBDa	CBC
CBD	

Cannabinoids

2192 HPLC3 20260506-5
05/06/2026
METRC THC RPD Status: Tested ;
METRC CBD RPD Status: Tested ; METRC Δ8-THC RPD Status: Tested

Pass



Analyte	LOQ	Mass	Mass
	mg/g	mg/g	%
THCa	0.5	0.7	0.07
Δ9-THC	0.5	1.0	0.10
Δ8-THC	0.5	<LOQ	<LOQ
THCV	0.5	0.7	0.07
CBDa	0.5	21.1	2.11
CBD	0.5	16.9	1.69
CBDV	0.5	13.5	1.35
CBN	0.5	<LOQ	<LOQ
CBGa	0.5	1.7	0.17
CBG	0.5	0.9	0.09
CBC	0.5	0.5	0.05
Total		56.8	5.68

Method: CH SOP 4400
*Total THC = THCa * 0.877 + d9-THC. **Total CBD = CBDa * 0.877 + CBD. LOQ = Limit of Quantification; NR = Not Reported; ND = Not Detected
>ULOQ = above upper LOQ. ChemHistory estimates its internal laboratory uncertainty acceptance limits to be 7% for sample cannabinoid potency results.



5691 SE International Way
Portland, OR
(503) 305-5252
http://chemhistory.com
Lic# OLCC 010-1002015CA5E ORELAP 4057

Patrick Trujillo
Laboratory Director

Confident LIMS
All Rights Reserved
coa.support@confidentlims.com
(866) 506-5866
www.confidentlims.com





Certificate of Analysis

Provided for quality control or research and development purposes.

Powered by Confident LIMS
2 of 3

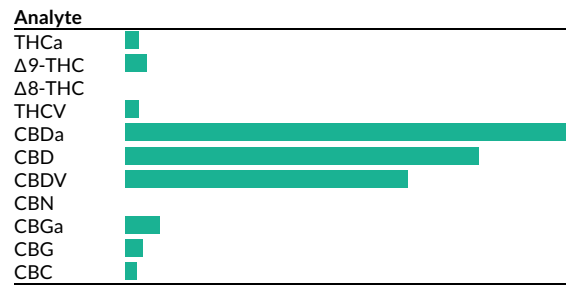
Sammie Rizk
11575 SW Pacific Highway
Tigard, OR 97223
bluestarhemp596@gmail.com
(503) 716-7329
Lic. #

Sample: 2605CH0094.0499

Strain: Train Wreck (CBD-V)
Batch#: ; Batch Size: g
Sample Received: 05/05/2026; Report Created: 05/11/2026
Harvest/Production Date:
Sampling: Random; Environment: Room Temp

Train Wreck (Batch 402)

Plant, Hemp
Harvest Process Lot: ; METRC Batch: ; METRC Sample:



Cannabinoids

2192 HPLC3 20260506-5
05/06/2026 | METRC THC RPD Status: Tested ; METRC CBD RPD Status: Tested ; METRC Δ8-THC RPD Status: Tested

Pass

0.16%
Total THC* (Calculated Decarboxylated Potential)

3.54%
Total CBD** (Calculated Decarboxylated Potential)

5.68%
Total Cannabinoids Analyzed

Moisture	Water Activity
6.7% 15.0 Limit	NR 0.655 Limit

Microbial Potential

Analyte	LOQ	Mass	Mass
	mg/g	%	mg/g
THCa	0.5	0.07	0.7
Δ9-THC	0.5	0.10	1.0
Δ8-THC	0.5	<LOQ	<LOQ
THCV	0.5	0.07	0.7
CBDa	0.5	2.11	21.1
CBD	0.5	1.69	16.9
CBDV	0.5	1.35	13.5
CBN	0.5	<LOQ	<LOQ
CBGa	0.5	0.17	1.7
CBG	0.5	0.09	0.9
CBC	0.5	0.05	0.5
Total		5.68	56.8

Method: CH SOP 4400
*Total THC = THCa * 0.877 + d9-THC. **Total CBD = CBDa * 0.877 + CBD. LOQ = Limit of Quantification; NR = Not Reported; ND = Not Detected
>ULOQ = above upper LOQ. ChemHistory estimates its internal laboratory uncertainty acceptance limits to be 7% for sample cannabinoid potency results.



5691 SE International Way
Portland, OR
(503) 305-5252
http://chemhistory.com
Lic# OLCC 010-1002015CA5E ORELAP 4057

Patrick Trujillo
Laboratory Director

Confident LIMS
All Rights Reserved
coa.support@confidentlims.com
(866) 506-5866
www.confidentlims.com





Certificate of Analysis

Powered by Confident LIMS
3 of 3

Sammie Rizk
11575 SW Pacific Highway
Tigard, OR 97223
bluestarhemp596@gmail.com
(503) 716-7329
Lic. #

Sample: 2605CH0094.0499

Strain: Train Wreck (CBD-V)
Batch#: ; Batch Size: g
Sample Received: 05/05/2026; Report Created: 05/11/2026
Harvest/Production Date:
Sampling: Random; Environment: Room Temp

Train Wreck (Batch 402)

Plant, Hemp
Harvest Process Lot: ; METRC Batch: ; METRC Sample:



Quality Control Data

Analytical Batch ID	QC Sample ID	Assay Name	QC Category Name
2192 HPLC3 20260506-5	PMB05052603F	Cannabinoids	Sample Duplicate

QC Notes

None

Compound	Blank	LCS Result	LCS (Expected)	LOQ	Matrix Duplicate	Sample Matrix	Matrix Spike % Rec.	LCS % Rec.	Acceptance Criteria	Units
THCa	0	5.07	5.41	0.04	41.79	43.19	90.562	93.715	90%-110%	%
Δ9-THC	0	6.46	6.25	0.04	0.75	0.8	99.560	103.36	90%-110%	%
CBDa	0	4.61	4.75	0.04	0.12	0.14	96.629	97.053	90%-110%	%
CBD	0	3.83	3.67	0.04	0	0	101.366	104.360	90%-110%	%
Δ8-THC	0	0	0	0.04	0	0	103.759	ERR	90%-110%	%

5691 SE International Way
Portland, OR
(503) 305-5252
<http://chemhistory.com>
Lic# OLCC 010-1002015CA5E ORELAP 4057



Confident LIMS
All Rights Reserved
coa.support@confidentlims.com
(866) 506-5866
www.confidentlims.com



Values reported relate only to the product tested. ChemHistory makes no claims as to the consumer safety or other risks associated with any detected or non-detected levels of any pesticides or residual solvents. This Certificate shall not be reproduced except in full, without the written approval of ChemHistory. QC Blank results of 0 are <LOQ. ORELAP accredited ID#4057, ISO 17025 accredited ID# 5487.01, and OLCC Licensed Cannabis Testing Laboratory #010-1002015CA5E.